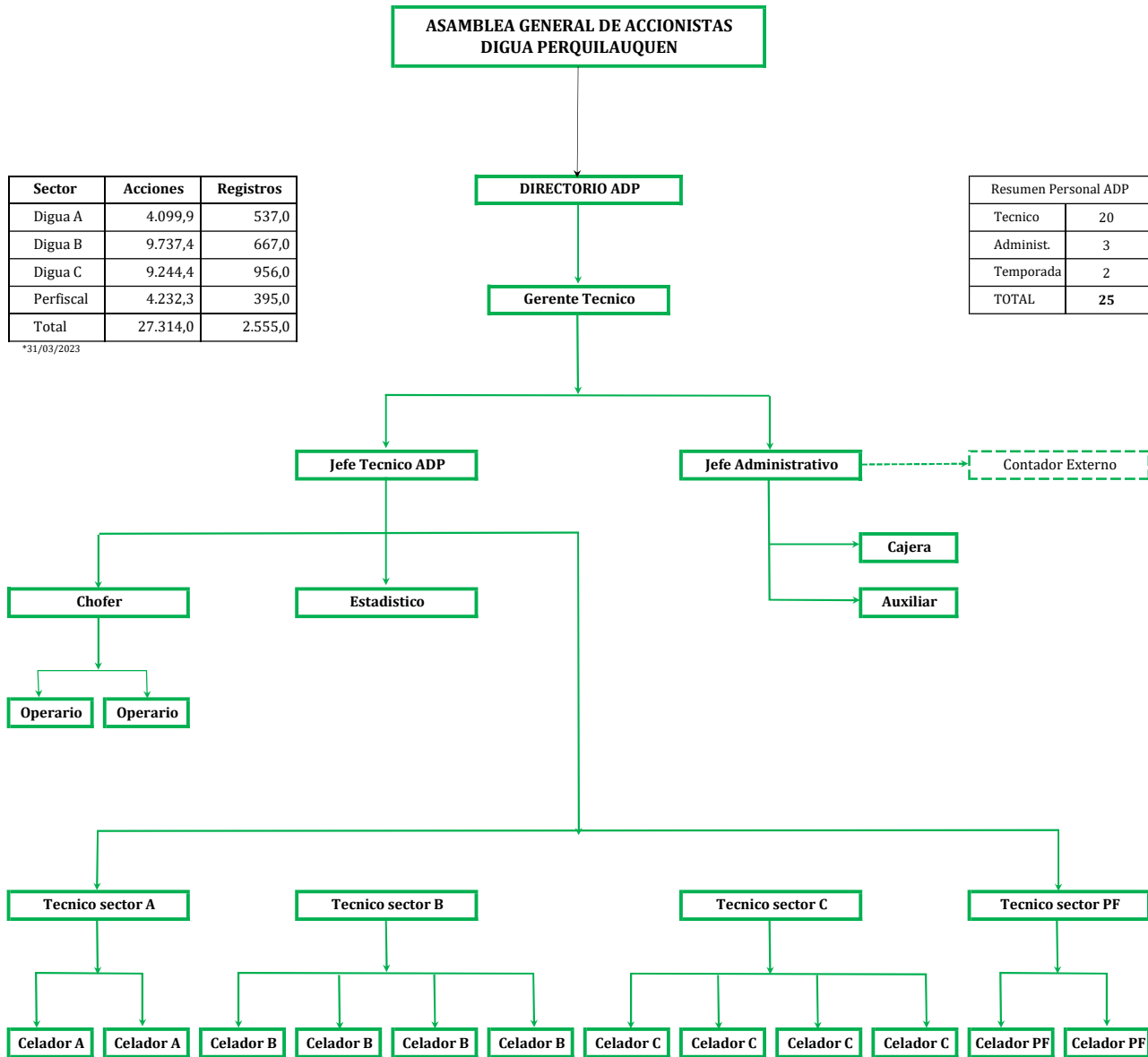


# ORGANIGRAMA ASOCIACION DIGUA PERQUILAUQUEN



Sector	Acciones	Registros
Digua A	4.099,9	537,0
Digua B	9.737,4	667,0
Digua C	9.244,4	956,0
Perfiscal	4.232,3	395,0
Total	27.314,0	2.555,0

\*31/03/2023

Resumen Personal ADP	
Tecnico	20
Administ.	3
Temporada	2
TOTAL	25